

# OUR GOAL

Langs is committed to ensuring that every person in our neighbourhoods will have a place to call home for health, wellness and community support.

## WHAT IS DEMOGRAPHIC DATA?

Data collected about characteristics of a population like gender, age, and income for example.


**Using demographic data we can reduce health inequities based on language, disability and other factors.**

Health Quality Ontario states that "health equity allows people to reach their full health potential and receive high-quality care that is fair and appropriate to them and their needs no matter where they live, what they have, or who they are."



## CONTACT US

### LANGS CHC


 519-653-1470

 [info@langs.org](mailto:info@langs.org)

 [www.langs.org](http://www.langs.org)


 1145 Concession Road,  
Cambridge N3H 4L5

### NORTH DUMFRIES CHC

 519-632-1229

 [info@langs.org](mailto:info@langs.org)

 [www.langs.org](http://www.langs.org)

 2958 Greenfield Road,  
Ayr NOB 1R0

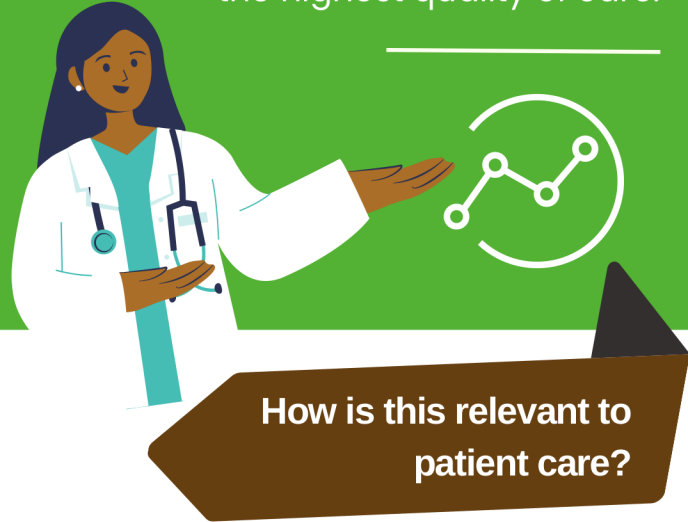


**COLLECTING PATIENT  
DEMOGRAPHIC  
INFORMATION**

# UNDERSTANDING INFORMATION COLLECTION

## Why is Langs collecting patient demographic data?

This information will provide us with a bigger picture of WHO we serve. It will also allow us to plan for services and provide even better care. Overall, ensuring our patients have access to the highest quality of care.



How is this relevant to patient care?

The Ontario Human Rights Commission strongly encourages organizations to collect and use demographic information to keep track of outcomes and promote equity.

Asking everyone who comes through our doors these questions will encourage patient-centered services. We will learn about patients' diverse needs and tailor care accordingly.

# COLLECTING DEMOGRAPHIC DATA

## Question List



- LANGUAGE**  
What language would you feel most comfortable speaking with your health care provider?
- BORN IN CANADA**  
Were you born in Canada?
- RACE/ETHNICITY**  
What best describes your racial or ethnic group?
- DISABILITIES**  
Do you have any of the following disabilities?
- GENDER**  
How would you describe your gender?
- SEX**  
What sex were you assigned at birth?
- SEXUAL ORIENTATION**  
What is your sexual orientation?
- INCOME**  
What was your total family income before taxes last year?
- NUMBER OF PEOPLE SUPPORTED BY INCOME**  
How many people does this income support?

# USE OF INFORMATION

Langs plans to study this information to help identify if patient health is impacted by language, disability, gender, etc.

This information will allow your provider to refer you to services and provide information based on your needs. This information will also be used in service planning and program development.

Participation is completely **voluntary**. Choosing not to respond **will not** affect your care or access to our services.



Information collected is protected and used for health care purposes only. Your personal health information will not be shared with anyone outside of your health team.